

A **Transend Corporation** White Paper



225 Emerson Street

Palo Alto, CA 94301

(650) 324-5370

www.transend.com

Scenario Guide

IMAP4 Server Email to **Microsoft Exchange**

Copyright May 25, 2010 by Transend Corporation

Authored by John E. Hieb

Table of Contents

Section 1.	Introduction.....	1
Section 2.	Basic setup	2
2-1	Preparation	2
2-2	Batch processing using the default template.....	2

Section 1. Introduction

This guide provides a customizable procedure for using Transend Migrator to migrate IMAP4 based email data into Microsoft Exchange Server. If this scenario does not meet your requirement refer to the Getting Started Guide or contact technical support.

IMAP4 Email Systems Supported

The following is a list of IMAP4 based email systems people have successfully converted with Transend Migrator. Your email system may still be supported even if it is not on the list as long as your email system adheres to the IMAP4 Protocol standards.

Supported IMAP Systems:

- Courier
- First Class
- GroupWise
- IncrediMail
- Mdaemon
- PostFix
- SendMail
- Kerio
- Cyrus
- GMail
- HotMail
- MailEnable
- Mirapoint
- Qmail
- Sun JES (iPlanet/ONE)
- Unlisted

Microsoft Exchange Messaging Platform's supported:

- Microsoft Exchange 2003
- Microsoft Exchange 2007
- Microsoft Exchange 2010

Microsoft Outlook email clients supported

- Outlook 2003
- Outlook 2007
- Outlook 2010

Note

Earlier versions of Microsoft Outlook may work but they are not officially supported.

Section 2. Basic setup

This section assumes the batch template (*IMAP4 Server Email to Microsoft Exchange.cfg*) included with *IMAP4 Server Email to Microsoft Exchange Guide.pdf* meets your requirements and that Transend Migrator is installed and ready to use. Information describing the template concept, product installation and environment setup may be found in the *Getting Started Guide*.

The Transend Migrator batch templates were created to reduce complexity by eliminating much of the migration setup and configuration. The following is the procedure for batch processing using the batch templates supplied with this distribution.

2-1 Preparation

This template is designed to migrate directly from a live email server that has the IMAP4 protocol enabled. It is also assumed that SSL is not required. If SSL is required then add the /SSL switch or designate the SSL port on the IMAP4 Server IP address.

- Review the *Preparing Microsoft Exchange Server for Migration* document and set Exchange permissions.
- Review *Preparing IMAP4 Based Server for Migration.pdf* for additional considerations.
- Set Microsoft Outlook to be the default email client for Windows, and create at least one Outlook profile.

2-2 Batch processing using the default template

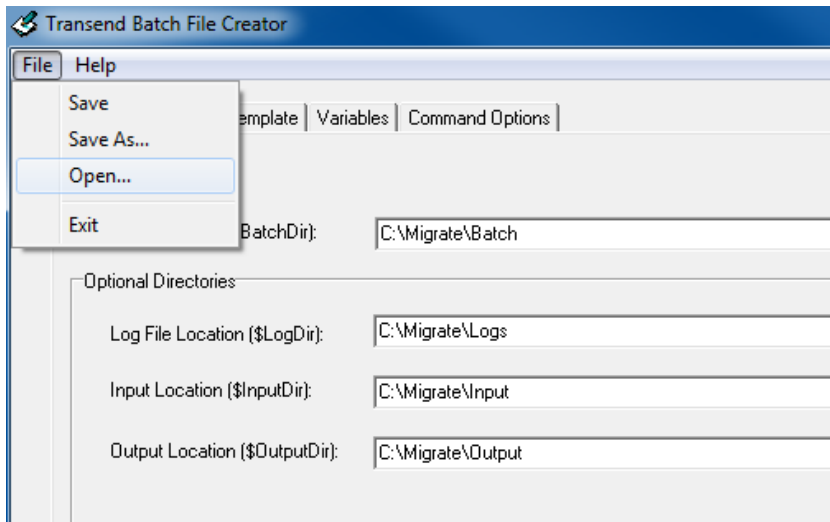
Batch processing helps you to convert one or more accounts an email server using the IMAP4 protocol into Microsoft Exchange using the Batch File Creator utility, which comes with Transend Migrator.

Review the *Getting Started Guide* prior to batch processing. Collect the required information and set permissions on Microsoft Exchange. Collect user information as required for the IMAP4 server you are migrating from. Once these steps are completed, follow these steps at the Transend Migration Workstation in your environment.

1. Download the Scenario: *IMAP4 Server Email to Microsoft Exchange Guide.zip* file. This file contains the template you use in the Batch File Creator.
2. Extract the contents of the ZIP file into a folder, such as *C:\Migrate*. The zip file contains the *IMAP4 Server Email to Microsoft Exchange Guide.cfg* configuration file for your project.

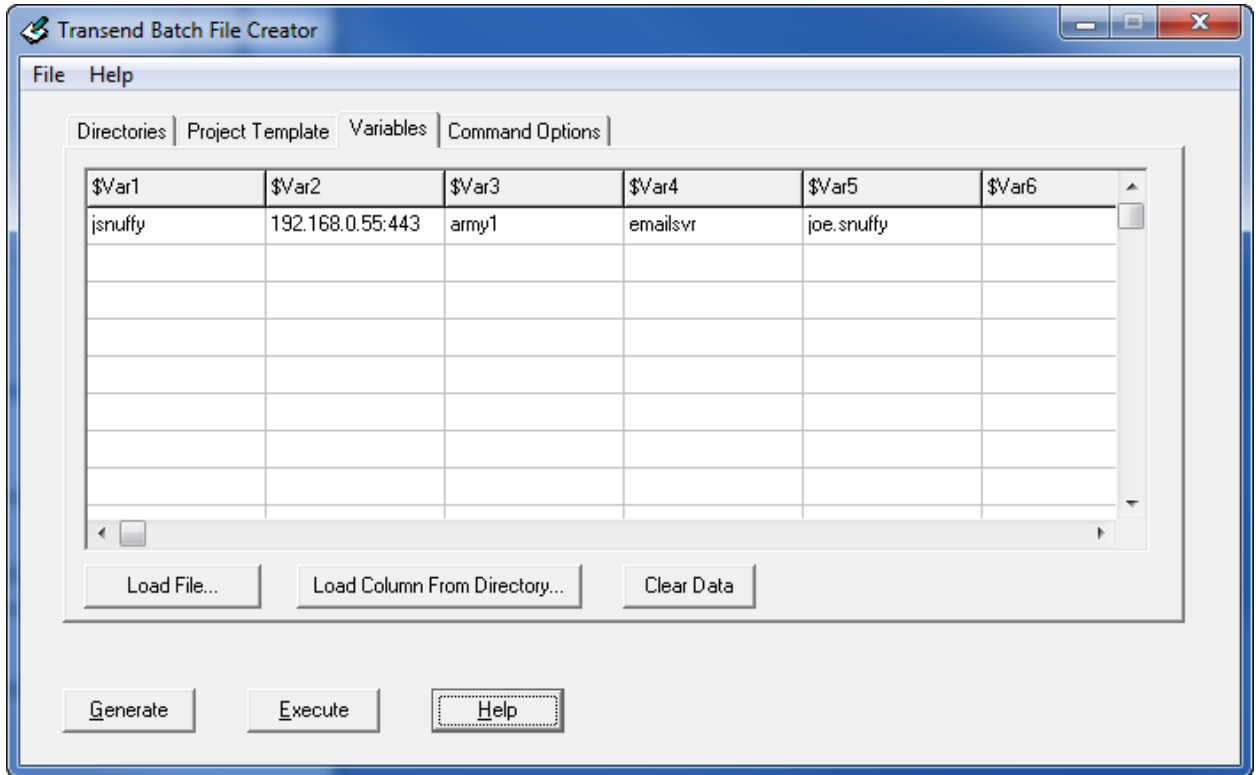
Scenario Guide: IMAP4 Server Email to Microsoft Exchange

3. Review the ReadMe.txt file that came with the *IMAP4 Server Email to Microsoft Exchange Guide.zip* file for important information.
4. Start the Batch File Creator.



5. Select **File** -> **Open** from the menu. You can press **No** to the prompt asking you to save the data if you have not made changes.
6. Browse to the location to where you extracted your CFG (default template) file and open it.
7. Select the **Variables** tab.

Scenario Guide: IMAP4 Server Email to Microsoft Exchange



8. Enter the values into the **Variable** tab manually or by using the **Load File** control to import the values. The default variable values are defined as:
 - a. \$Var1 = the user name for the source IMAP account. Depending on the source email server you may have to enter just the user name or the entire user email address e.g. jsnuffy or jsnuffy@acme.com.
 - b. \$Var2 = the domain name or the IP address of the source IMAP4 email server.
 - c. \$var3 = the password for the source account.
 - d. \$Var4 = the system or cluster name of the Exchange Server
 - e. \$Var5 = the user name for same person on the Exchange Server.

Continue to fill in the rows and add user information for the other accounts to be migrated. If you have a CSV file with the user information, then press the **Load File** button to load the CSV file (The CSV file is a text file. Each variable value is separated by a comma).

9. Press the **Generate** button to create the batch processing script and its DAT files.
10. Press the **Execute** button to begin processing, which starts in a command window.