

A **Transend Corporation** White Paper



225 Emerson Street

Palo Alto, CA 94301

(650) 324-5370

www.transend.com

Batch Template

Technical Reference Guide for IBM Lotus Foundations Start

Copyright & Trademark Information

The following terms are trademarks of International Business Machines Corporation in the United States or other countries or both:

AIX	DB2	DB2 Extenders
DB2 OLAP Server	DB2 Universal Database	DeveloperWorks
Domino	Domino.Doc	e-business on demand
IBM	LearningSpace	Lotus
Lotus Enterprise Integrator	Lotus Instant Messaging	Lotus Notes
Lotus Workflow	MQSeries	OS/400
PartnerWorld	QMF	QuickPlace
Redbooks	RS/6000	Sametime
Tivoli	WebSphere	

Transend, Transend Migrator and Transend Migrator for IBM Lotus Foundations are all trademarks of Transend Corporation.

Adobe and Adobe Acrobat are trademarks of Adobe Systems Incorporated.

Alphablox is a registered trademark of Alphablox Corporation in the United States, other countries, or both.

The IBM logo is a registered trademark of IBM Corporation.

The e-business logo is a trademark of IBM Corporation.

Intel and Pentium are trademarks of Intel Corporation.

Java and all Java-based trademarks and logos are trademarks or registered trademarks of Sun Microsystems, Inc. in the United States and/or other countries.

Linux is a registered trademark of Linus Torvalds.

Microsoft, Windows, Windows NT, Windows CE, and Windows 2000 are trademarks of Microsoft Corporation in the United States and/or other countries.

Netscape is a registered trademark of Netscape Communications Corporation in the United States and other countries.

Oracle is a registered trademark of Oracle Corporation.

Palm is a registered trademark of Palm, Inc.

Red Hat is a registered trademark of Red Hat, Inc.

SUSE is a trademark of SUSE LINUX Products GmbH.

Symantec AntiVirus is a registered trademark of Symantec Corporation.

Other company, product, and service names may be trademarks or service marks of others.

Table of Contents

Section 1. Introduction.....	1
1-1 Using this guide	1
Section 2. Modifications by scenario.....	2
2-1 Microsoft Exchange to Lotus Foundations Start	3
2-1-1 Changing group folder names.....	3
2-1-2 Customizing your templates with Program Options (switches)	3
2-1-3 Preventing certain folders from migrating.....	3
2-1-4 Only converting certain folders	4
2-1-5 Changing the user variables	4
2-1-6 Optional pre-processing and post-processing commands.....	5

Section 1. Introduction

This guide instructs the user in the procedure for modifications to the batch templates provided with the Transend Migrator for IBM Lotus Foundations. Batch templates for the migration scenarios are unique. Before using this guide the user should:

- Refer to the *Getting Started Guide* and select the scenario that best fits the customer requirement (Getting Started Guide.doc)

If the default batch template described in the Scenario Guide does not meet the customer requirement, and requires modifications to meet that requirement, this guide should be reviewed. Once the modifications are complete, the modified batch template can be used with the procedures in the Scenario Guide to facilitate the migration.

1-1 Using this guide

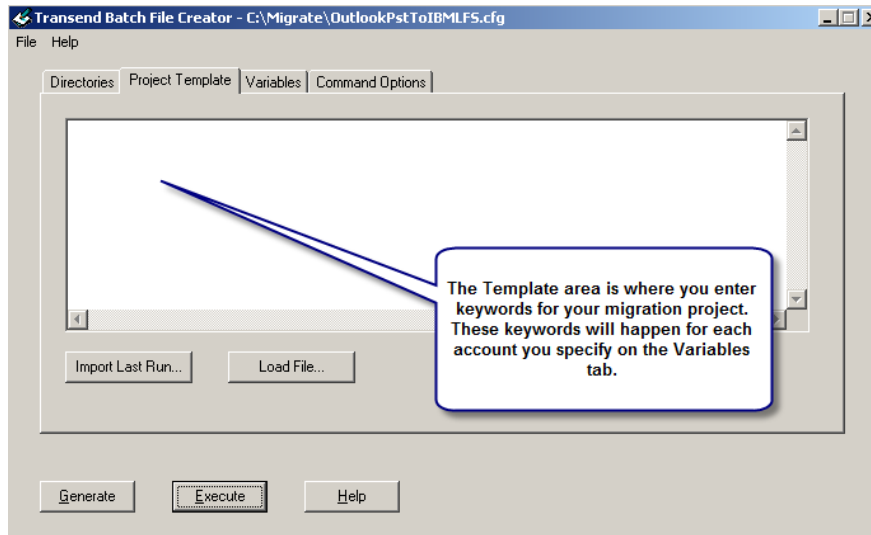
The batch template file and the procedure for modifying the batch template are unique, matching the migration scenario your customer requires. The file names for the batch template are specified in the *Getting Started Guide* under the scenario listing (in Section 1 and as listed on the Migration Worksheet).

Once the template file is in hand, look for the section for the customer migration scenario below. Under this section access the modification you selected in the *Getting Started Guide* and recorded on the Migration Worksheet. Follow this procedure to update the batch template in a text editor. Once modifications are complete, return to the appropriate migration Scenario Guide and begin the batch migration.

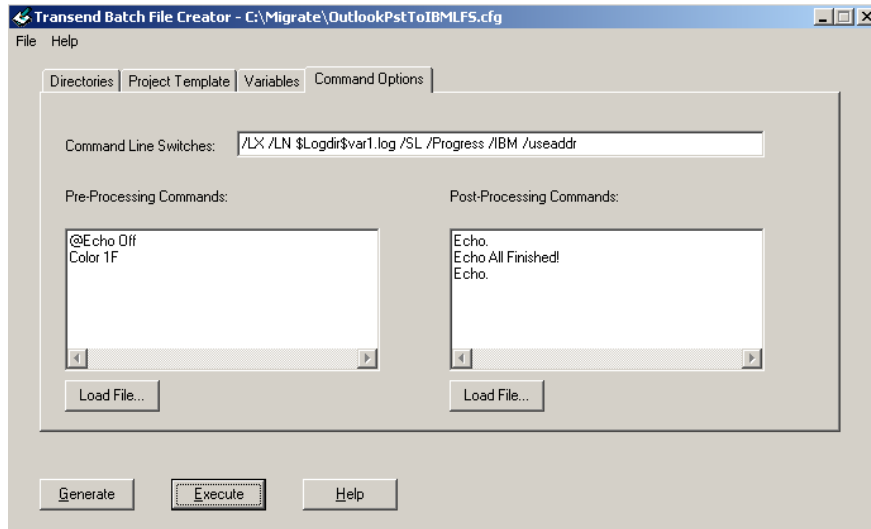
Section 2. Modifications by scenario

This section assumes the batch template included with the Transend Migrator for IBM Lotus Foundations for the customer migration scenario is in hand. Locate the appropriate migration scenario from the L2 sections below and continue.

- To modify or add items to your template, open the Batch File Creator utility and then select the **Project Template** tab.



- To modify or add switches to your template, open the Batch File Creator utility and then select the **Command Options** tab.



2-1 Microsoft Exchange or Outlook to Lotus Foundations Start

The following options for modifying the batch template for Microsoft Exchange or Outlook migrations are in the following sections. Locate those that represent the modifications required to fulfill the customer requirement and complete the changes as directed.

2-1-1 Changing group folder names

Group folders are provided to organize e-mail messages. Content can be directed to a folder of your choice in the user's target e-mail box. Follow these steps to modify group folder names in the default batch template:

1. Start the Batch File Creator and select the **Command Options** tab.
2. Enter `/GN <foldername>` in the Command Line Switches text box. `<foldername>` is the folder name you want to migrate your messages into. For example, enter: `/GN Archives` to migrate your messages into the `Archives` folder.
3. Optionally, if you want to remove the default folder name then use the `/GN ROOT` switch option.

2-1-2 Customizing your templates with Program Options (switches)

Transend Migrator provides option switches to facilitate a number of controls that can be applied during the convert and migration process.

Follow these steps to customize your migration by optional switches:

1. Open the help file section titled **Program Options**. Decide what optional switches you may want to use.
2. Start the Batch File Creator and select the **Command Options** tab.
3. Enter switches into the Command Line Switches text box. Separate the switches by a space if more than one switch is used.

2-1-3 Preventing certain folders from migrating

In some cases, all users or select groups of users might require that migration ignore (exclude and not migrate the contents of) certain folders during the migration. To accomplish this, add 'Except' statements to the top of the template file. By default, ALL folders are migrated to the target in the same state.

Follow these steps to prevent certain folders from migrating:

1. Start the Batch File Creator and select the **Project Template** tab.

2. Use the following syntax to prevent a folder from migrating:

```
Except = <foldername>
```

2-1-4 Only converting certain folders

In some business cases users might require only folders specified (implicitly excluding any others). To accomplish this, add 'Convert' statements to the top of the template file. By default ALL folders are migrate to the target in the same state.

Follow these steps to convert only the folder(s) you specify:

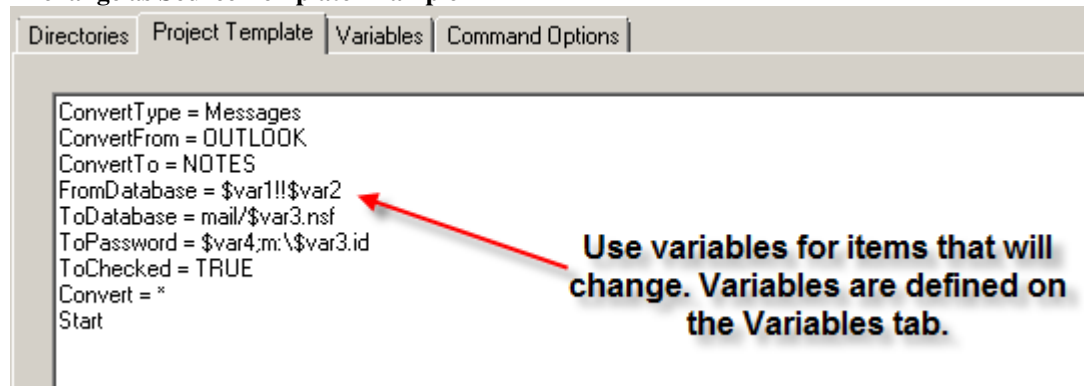
1. Start the Batch File Creator and select the **Project Template** tab.
2. Use the following syntax to migrate only the specified folder

```
Convert = <foldername>
```

2-1-5 Changing the user variables

Variables are used in the **Project Template** or the **Command Options** tab. Variables normally contain user account information, file names, or directory locations. The defaults required by the migration scenario you selected are defined in the corresponding Scenario Guide. In some business cases, users might require other values be captured and converted during migration from the source to the target system.

Exchange as Source Template Example



The screenshot shows the Batch File Creator interface with the 'Project Template' tab selected. The 'Variables' sub-tab is active, displaying a list of variables defined in the template file. A red arrow points from a text box to the 'FromDatabase' variable.

```
ConvertType = Messages
ConvertFrom = OUTLOOK
ConvertTo = NOTES
FromDatabase = $var1!!$var2
ToDatabase = mail/$var3.nsf
ToPassword = $var4;m:\$var3.id
ToChecked = TRUE
Convert = *
Start
```

Use variables for items that will change. Variables are defined on the Variables tab.

1. Identify what information must be represented by a variable.
2. Enter the field name and the variable designator in place of the actual value on its own line in the template file.

Note: You can define up to six variables and they are represented by \$Var1, \$Var2, \$Var3, \$Var4, \$Var5, and \$Var6. Notice the column headings below. Each heading is labeled with the

variable associated with it. See the corresponding Scenario Guide for detail on how to enter the values during migration.

When migrating from an Exchange Server you may use the following syntax when converting directly from an Exchange Account. Substitute ServerName and UserName with variables as shown in the example.

Server Syntax

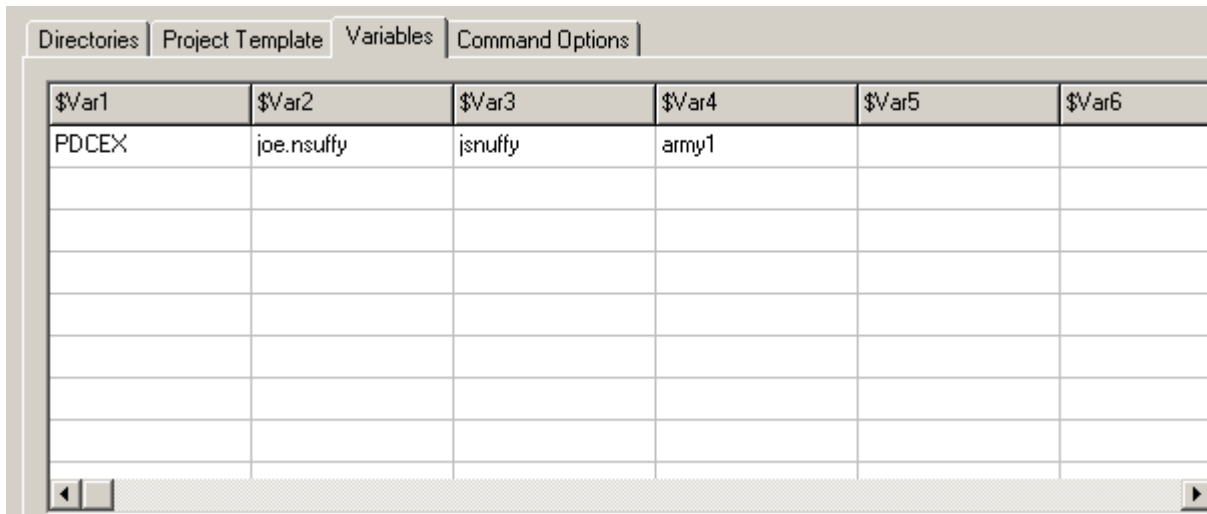
FromDatabase = <servername>!!<username>

Example

FromDatabase = \$var1!!\$var2

If converting from Microsoft Outlook PST files then enter the path and filename of the PST file. You should use variables when converting from multiple PST files.

Exchange as Source Variable Example



The screenshot shows a software interface with four tabs: 'Directories', 'Project Template', 'Variables', and 'Command Options'. The 'Variables' tab is active, displaying a table with six columns labeled \$Var1 through \$Var6. The first row contains the values PDCEX, joe.nsuffy, jsnuffy, army1, and empty cells for \$Var5 and \$Var6. The table has a scroll bar at the bottom.

\$Var1	\$Var2	\$Var3	\$Var4	\$Var5	\$Var6
PDCEX	joe.nsuffy	jsnuffy	army1		

2-1-6 Optional pre-processing and post-processing commands

The pre-processing and post-processing command windows are optional. If you want to run a DOS command before or after each user is migrated, then enter those commands in the text box provided.