

Batch Process Automation and Batch File Creator™ With Transend Migrator Standard and Forensic Editions

Quick Start

Setting up a batch process can be confusing but once you see the batch process in action you'll find that batch processing is easy to do. Use this Quick Start to perform your first batch conversion. Review the output to become acquainted with the components of a batch process, and review the Help File for additional "keywords" used within the "DAT File".

Create a template for your batch process. Create the template by performing a conversion with the graphical version of Transend Migrator. Walk through the following steps:

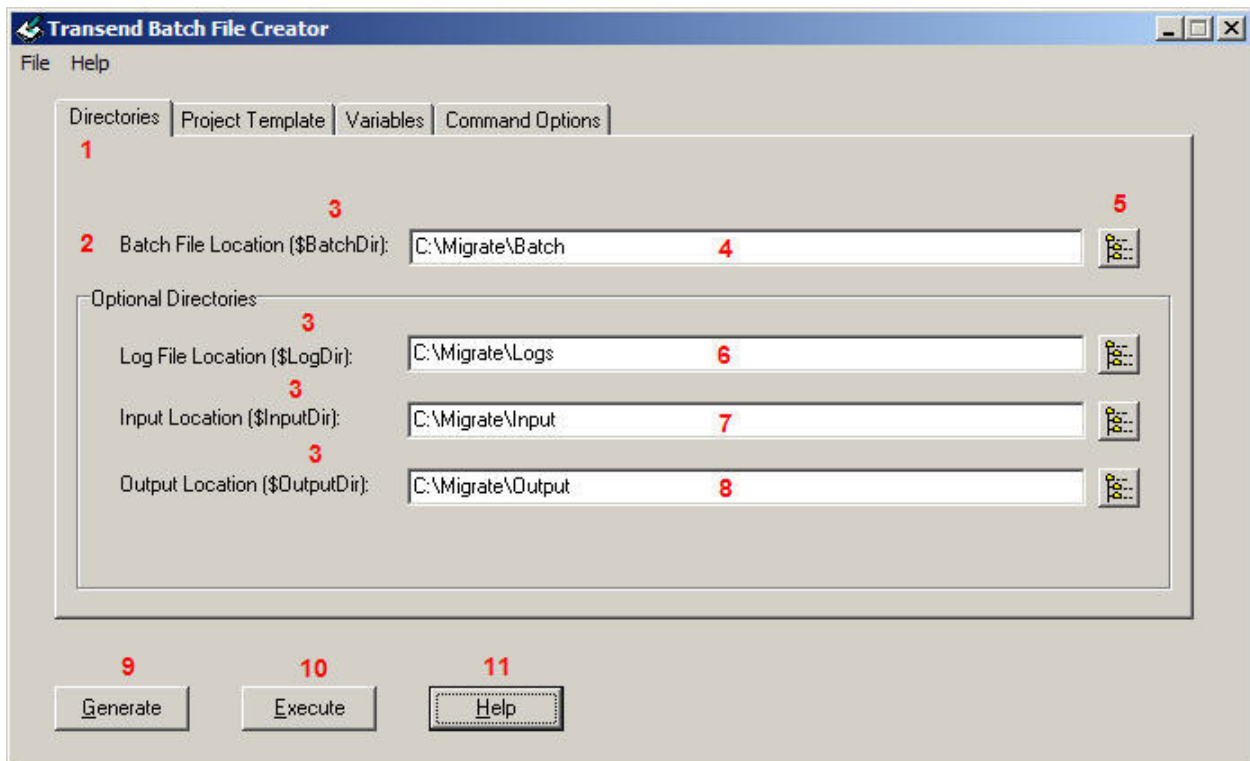
1. Perform a single conversion with the graphical version of Transend Migrator. By doing so, a sample DAT file called **lastrun.dat** will be created inside the "**C:\Documents and Settings\Application Data\Transend**" directory for XP and later, or "**C:\Program Data\Transend**" directory for Vista. This file represents the keywords used in that single conversion.
2. After successfully converting data, close Transend Migrator and start the Transend **Batch File Creator**.
3. Select the **Directories** tab and enter the required and optional path information.
4. Select the **Project Template** tab and select the Import Last Run button. This button imports the contents of the **lastrun.dat** created in step 1.
5. While in the **Project Template** tab, add or delete any items you may need for your conversion project.
6. While in the **Project Template** tab substitute keyword items with a variable by using \$var1, \$var2, \$var4 for example. These variables can represent source account names, passwords, and destination account names, etc.
7. Select the **Variables** Tab and enter in or import in values for the variables you declared in the Project Template tab.
8. Select the **Command Options** tab and enter in any optional switches, pre-processing, or post-processing commands. At a minimum, you might want to enable logging by typing in /LX and enable screen logging by using /SL.
9. Once the required information is entered then generate the batch and DAT files by selecting the **Generate** button. The Generate button places the batch and DAT file into the location defined on the Directories tab.
10. After the batch and DAT file(s) are generated you can begin the conversion process by selecting the **Execute** button. Alternately, select the auto.bat file located in the batch file directory.

Note

Each time a change is made on any of the tabs you'll need to **Generate** the files again for the changes to take place.

The Directories Tab

The **Directories** tab is used to define where the batch files and DAT files are located. If the directories do not exist the Batch File Creator will create them when the **Generate** button is selected.



Item 1: Enter the path to where the batch file and DAT files will be created. This is the only required location. If the location does not exist then it will be created for you.

Item 2: Optionally, select this button to select an existing folder.

Item 3: Each location is associated with a variable. These variables can be used in your batch file or DAT file.

Note: The **Batch File Creator** will always supply the trailing backslash after the directories even if they are not entered here. In other words, if the batch file location is entered as C:\Migrate\Batch the variable will record the path as C:\Migrate\Batch\ (notice the trailing backslash).

Item 4: Type in the path to the log file folder into the text box or browse to the desired folder and select it. This is an optional field.

Item 5: Type in the path to the input folder or browse to the desired folder and select it. This is an optional field.

Item 6: Type in the path to the output folder or browse to the desired folder and select it. This is an optional field.

Item 7: Select this button to generate the batch file script and DAT files. Remember, each time you make a change you will need to regenerate the batch file script and DAT files. If the batch file and DAT file exist then they will be overwritten.

Item 8: Select this button to execute and begin the batch process. The Execute button will start the auto.bat file located in the path defined in Item 4. Optionally, you can run the batch process by selecting the auto.bat file located in the directory defined by Item 4.

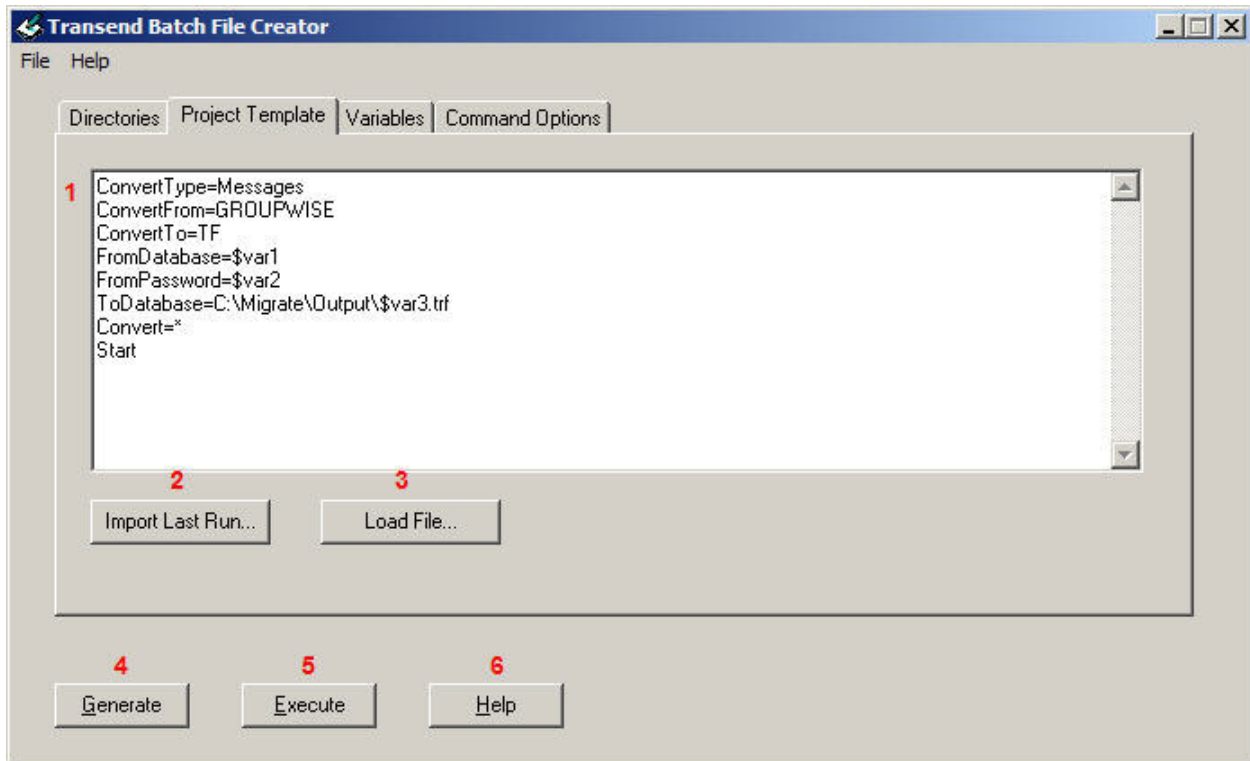
Item 9: Select this button to get context sensitive help for this subject.

The Project Template Tab

The **Project Template** is a text box which allows you to enter in the required information for the DAT file, which is the file that tells the Batch Mode Processor what to convert.

The **Project Template** contains information on what you are converting, source account information, destination account information, and any exceptions required for the conversion process.

The **Project Template** makes use of variables so that multiple accounts can be converted. Those variables are defined under the **Variables** tab.



Item 1: Enter the information required for your conversion project.

Note: The **START** keyword is required and it tells the Batch Mode Processor that all keyword items have been entered and that it may begin.

Item2: Optionally, use the **Import Last Run** button to import a copy of the lastrun.dat file (if it exists). The lastrun.dat file is created after a successful conversion with the graphical version of Migrator. Therefore, perform a graphical conversion first and then use the lastrun.dat file as an example.

Item 3: Use the Load File button to import another DAT or TEXT file if one exists. These text files are user created.

Item 4: Select this button to generate the batch file script and DAT files. Remember, each time you make a change you will need to regenerate the batch file script and DAT files. If the batch file and DAT file exist then they will be overwritten.

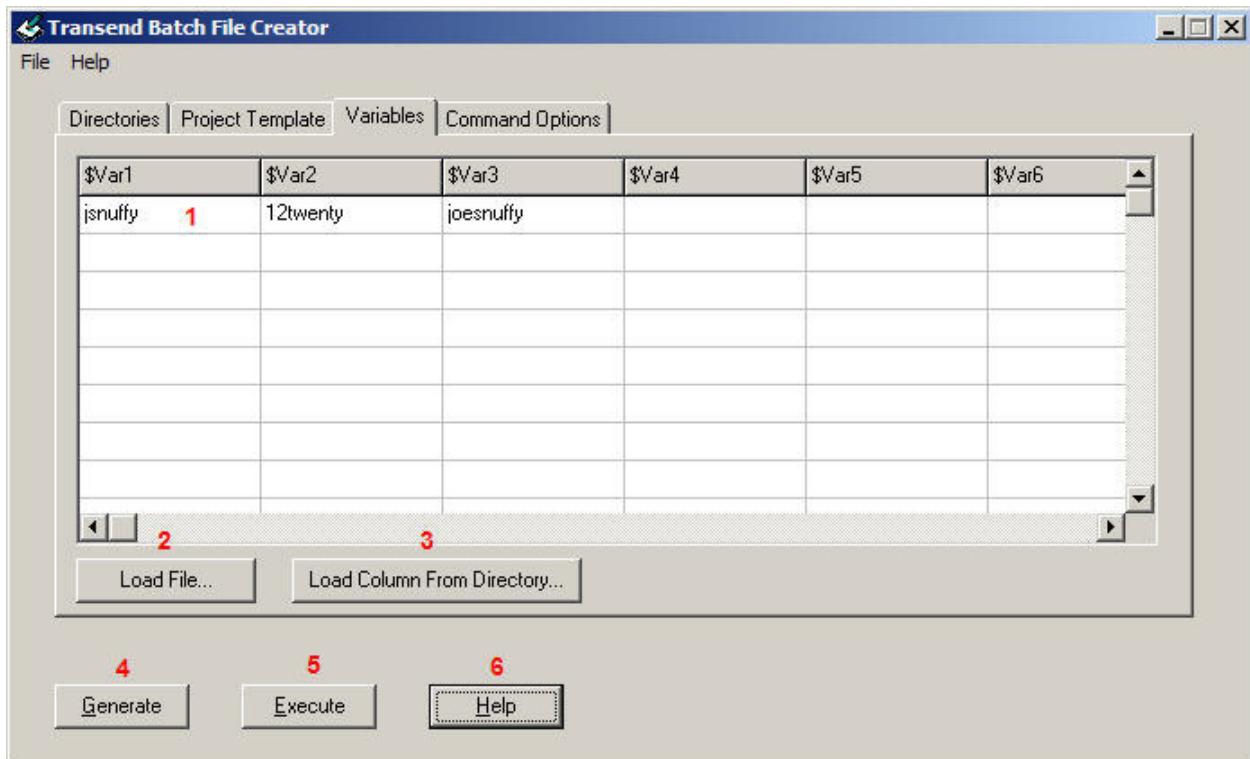
Item 5: Select this button to execute and begin the batch process. The Execute button will start the auto.bat file located in the path defined on the Directories Tab and in Item 4. Optionally, you can run the batch process by selecting the auto.bat file located in the directory defined by Item 4.

Item 6: Select this button to get context sensitive help for this subject.

The Variables Tab

Variables are required for the **Project Template** and they are defined here on the Variables tab. The Batch File Creator supports up to six variables. The variables are commonly used for source account information and destination account information, and are used when multiple accounts are converted.

Variables are required in the Project Template tab.

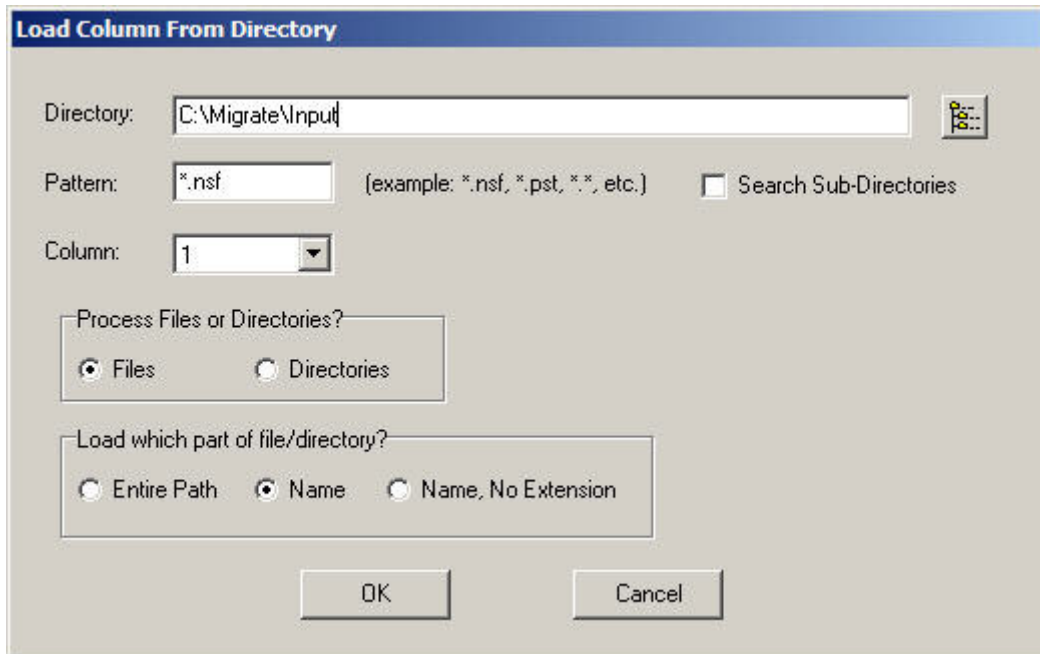


Item 1: Each column is a variable and each column is given a variable name such as \$var1. For example, if the project template FromDatabase keyword = \$var1 then each entry in the \$var1 column will be converted.

Item 2: Optionally, rather than typing in each variable you can import a comma separated value file (CSV), which contains the values needed for your particular conversion.

Item 3: Opens up the **Load Column from Directory** window. Use this option to load directories or specific files. Select the desired options to popular the variable column.

The **Load Column from Directory** Window will load a given column (variable) based on a wildcard file specification. For example, you can find *.nsf in a directory and place each filename into \$var1. Additionally, you can place directories into a given variable.



Item 4: Select this button to generate the batch file script and DAT files. Remember, each time you make a change you will need to regenerate the batch file script and DAT files. If the batch file and DAT file exist then they will be overwritten.

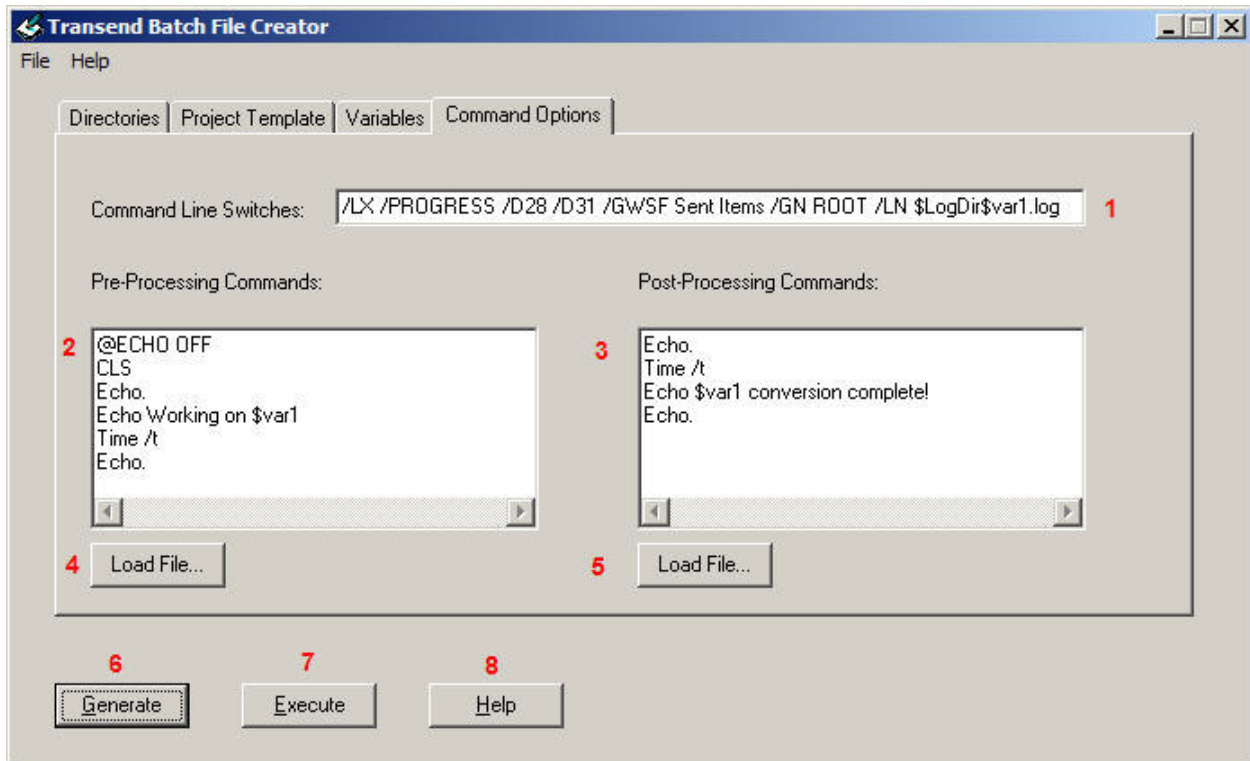
Item 5: Select this button to execute and begin the batch process. The Execute button will start the auto.bat file located in the path defined on the Directories Tab and in Item 4. Optionally, you can run the batch process by selecting the auto.bat file located in the directory defined by Item 4.

Item 6: Select this button to get context sensitive help for this subject.

The Command Options Tab

Command Options are optional items used to customize the conversion project. Commonly, command line switches are used to fine tune the conversion. At a minimum, logging (/LX) is recommended.

Review the Command Line Options section of the help file for the General, Source and destination items related to your conversion project.



Item 1: Enter the command option switches desired for your conversion project.

Item 2: Enter any optional pre-processing commands.

Item 3: Enter any optional post-processing commands.

Item 4: Optionally, load a text file containing pre-processing commands.

Item 5: Optionally, load a text file containing post- processing commands.

Item 6: Select this button to generate the batch file script and DAT files. Remember, each time you make a change you will need to regenerate the batch file script and DAT files. If the batch file and DAT file exist then they will be overwritten.

Item 7: Select this button to execute and begin the batch process. The Execute button will start the auto.bat file located in the path defined on the Directories Tab and in Item 4. Optionally, you can run the batch process by selecting the auto.bat file located in the directory defined by Item 4.

Item 8: Select this button to get context sensitive help for this subject.

Review each of the following sections for details on how to use the Transend Batch File Creator.

CUSTOMIZATION

While the standard version of Transend Migrator meets a wide variety of conversion requirements, Transend is pleased to work with IT organizations to tune Transend Migrator if modifications are necessary for a particular environment or needs. For large scale migrations, for example, it may be desirable to modify defaults or assist in the development of a wrapper that draws on Transend Migrator's batch mode processor to fully automate the migration process. Or, it may be desirable to modify the GUI and provide defaults that conform to a particular migration process and environment. Transend has extensive experience working with IT departments around the world in such efforts.

FOR MORE INFORMATION

This document is intended to provide an overview of the batch process using the Batch File Creator.

Transend Migrator is a utility for converting between a wide variety of email systems, including Lotus Notes, Microsoft Outlook/Exchange, Novel GroupWise, Netscape, Eudora, IMAP and more. For additional information, please contact Transend Corporation:

Transend Corporation
Email: sales.info@transend.com
Telephone: 650-324-5370
Fax: 650-324-5377