

## CONNECTING TO MICROSOFT EXCHANGE SERVER With Transend Migrator Standard and Forensic Editions

### OVERVIEW

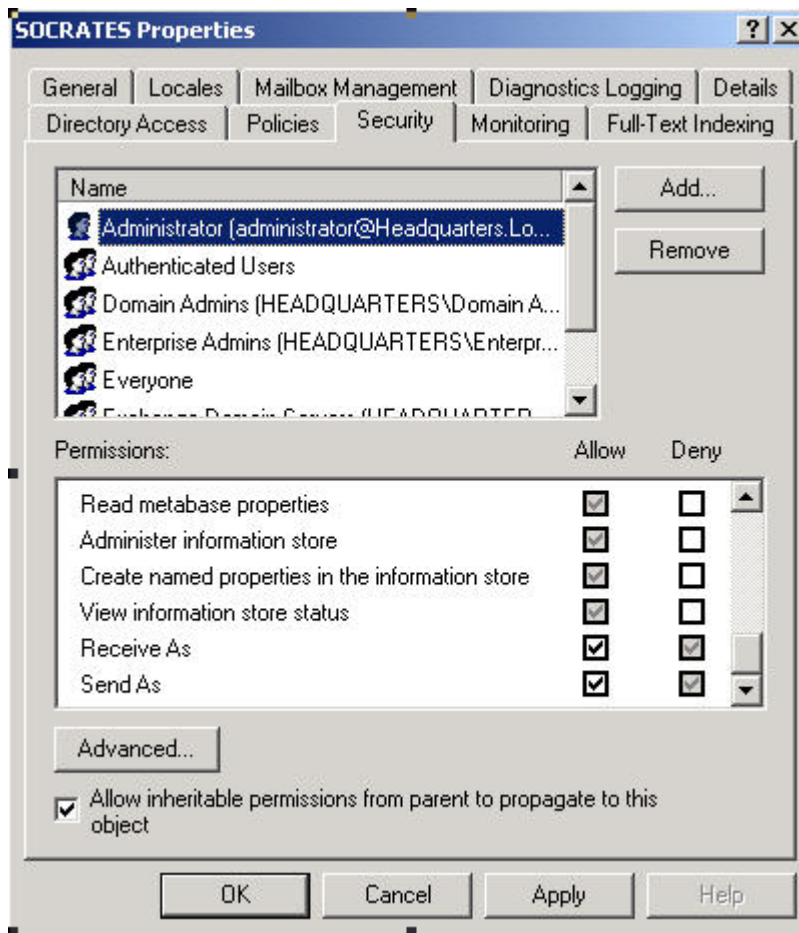
Transend Migrator supports converting to or from Microsoft Exchange 5.5 through version 2007. The software requires that Outlook is installed on the computer where Transend Migrator is installed. When converting to or from Microsoft Exchange, Transend Migrator will use the Outlook API and MAPI to connect to the Exchange Server.

The account you use to migrate with must be an active member of the domain you are converting from or to. This AD account must have, at a minimum, **receive-as** permissions on the Exchange Information Store or Mailbox Database. The goal of setting this permission is so that you will not need to use a password for each migrated account, and so that you will not need to create a profile for each user. Creating profiles for users is optional.

### PERMISSIONS – EXCHANGE 2000 & 2003

A good practice is to create an AD Domain group and then add users to that group who will be performing the migration of multiple accounts. Give that group the Receive-As permissions on the Exchange Information Store where the user accounts are located.

1. After creating a Migration user or Group, start the Microsoft Exchange System Manager application.
2. Locate the Exchange Server and its Information Store.
3. Right Click on the Information store and select Properties.
4. Select the Security Tab
5. Select the group or account that will have the Receive-As permissions.



6. In the Permissions window, scroll down and allow Send-As and Receive-As privileges for your group or specific account.
7. Apply these changes and exit out of the Exchange Administrator.

## PERMISSIONS – EXCHANGE 2007

In Exchange 2007, Receive-As permissions can be set by using the Exchange Management Shell. The following command line is the syntax you can use to give a Migration group or user full access to the Mailbox database:

**Add-ADPermission -Identity "Mailbox Store" -User "Trusted User" -ExtendedRights Receive-As**

The *Mailbox Store* is the Exchange Server mailbox database, and the *Trusted User* is the Active Directory user or Group, which will be given

permissions. For more information about giving access to the Mailbox Database please review the Microsoft Technet Article located at:

<http://technet.microsoft.com/en-us/library/aa996343.aspx>

## NO OUTLOOK PROFILE NEEDED

You can convert directly from or to the Exchange Server by using special syntax. This syntax will work if Outlook has been setup with at least one active profile, and when Outlook is the default email client for Windows. After doing that, the following syntax will allow you to convert directly from or to an account without having to create a profile for it.

```
<servername>!!<username>
```

For example, if your servername is Plato and the username is jsnuffy enter in the information as follows:

```
Plato!!jsnuffy
```

In Batch Mode, keywords are used to specify the account being migrated from or to. When converting to Microsoft Exchange then use the following keyword and syntax:

```
ToDatabase = <servername>!!<username>
```

When converting from Microsoft Exchange Server use the following keyword and syntax:

```
FromDatabase = <servername>!!<username>
```

**Note:** Sometimes, the username will be similar to another Exchange account and this will confuse MAPI. An example of this is when you create an Outlook profile or send a message to another person. If you enter a user name and Outlook asks you to decide which user to send the message to; this usually happens when more than one user has a similar name i.e. alias. In situations like this, the above syntax will also be confused. To get around this, use the fully qualified name when migrating to or from Exchange Servers. For example:

```
<servername>!!<username>@acme.com
```

## FOR MORE INFORMATION

Transend Migrator is a utility for converting between a wide variety of email systems, including Lotus Notes, Microsoft Outlook/Exchange, Novel GroupWise, Netscape, Eudora, IMAP and more. For additional information, please contact:

Transend Corporation  
Email: [sales.info@transend.com](mailto:sales.info@transend.com)  
Telephone: 650-324-5370  
Fax: 650-324-5377